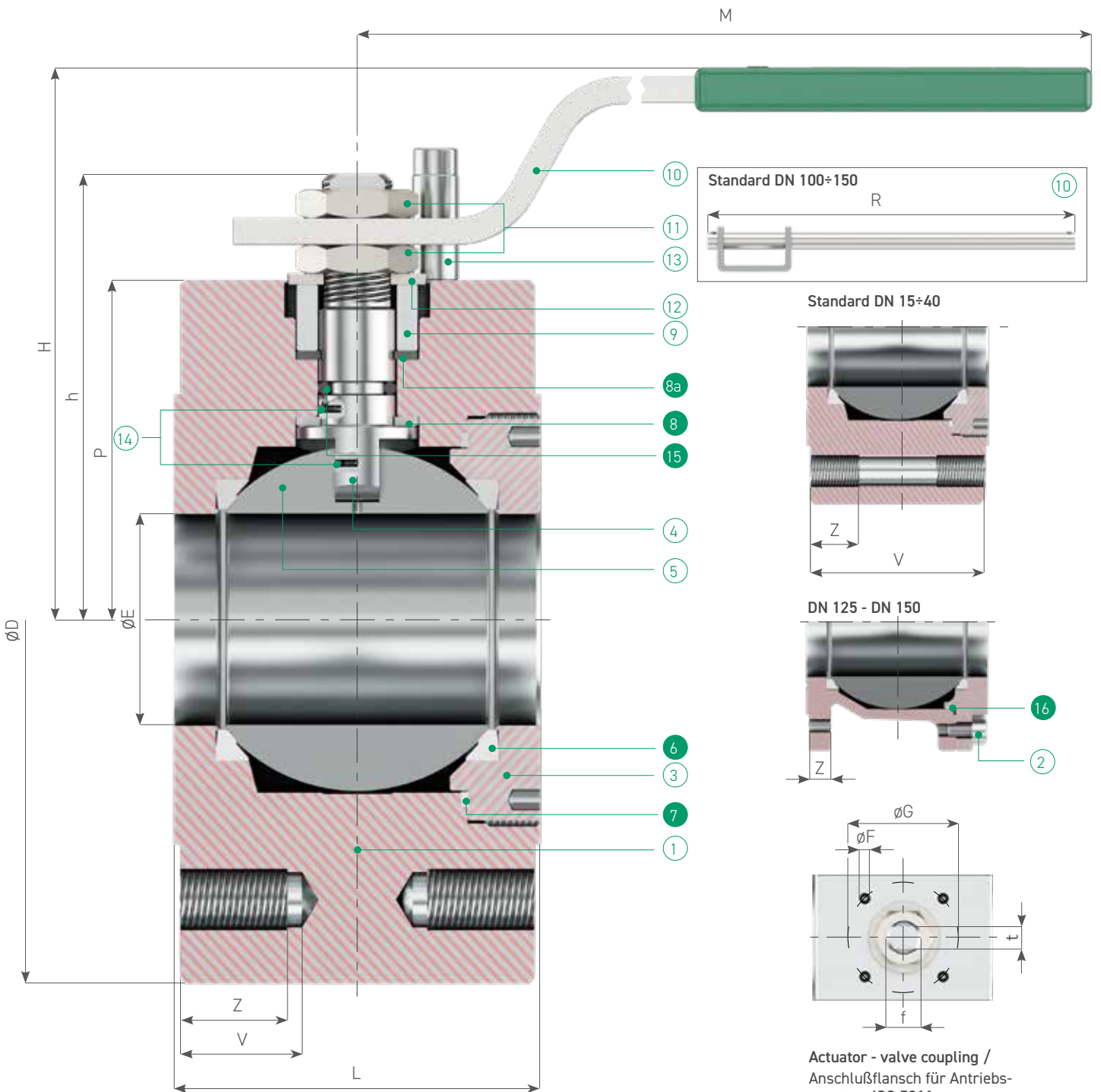
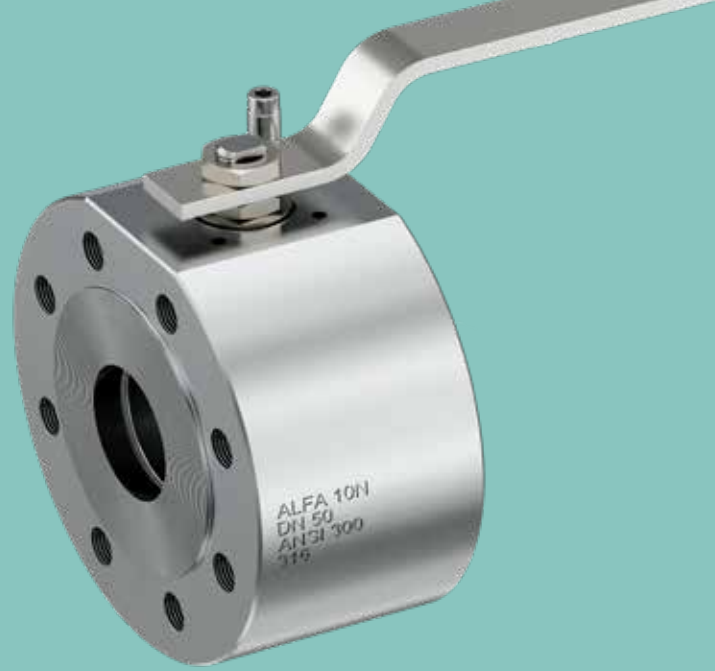


ALFA 10N/10NF ANSI 300

Wafer type ball valve
Kompaktkugelhahn




ALFA 10N/10NF ANSI 300

Standard valve materials / Kugelhahn Standardwerkstoffe

	PART NAME BEZEICHNUNG	Q.TY STK	MATERIALS WERKSTOFFE	
1	body Gehäuse	1	ASTM A105 *	ASTM A479 316/316L **
2	screw Schraube	8	Cl. 8.8 Zinc.	A4-70 (AISI 316)
3	closure Einschraubring	1	ASTM A105 *	ASTM A479 316/316L **
4	stem Schaltwelle	1	ASTM A479 F6a (AISI 410)	ASTM A182 316/316L
5	ball Kugel	1	ASTM A351 CF8	ASTM A351 CF8M
6	seats Sitzring	2	TFM	
7	body gasket Gehäusedichtung	1	P.T.F.E./GRAPHOIL (DN ≥ 100)	
8	washer Dichtscheibe	1	P.T.F.E.	
8a	stem gasket Schaltwellendichtung	2	GRAPHOIL	
9	gland Druckring	1	CS Zinc Coated/C-Stahl verz.	Stainl. Steel / Edelstahl 316
10	lever Handhebel	1	Carbon Steel Zinc Coated / C-Stahl verzinkt	
11	stem nut Schaltwellenmutter	2	Cl.8	A4-40 (AISI 316)
12	spring washer Tellerfeder	2	51CrV4 Zinc Coated/verz.	AISI 316
13	stop device Anschlag	1	Cl. 8.8 Zinc Coated/verzinkt	AISI 316
14	antistatic device Antistatikkvorrichtung	2	AISI 316	
15	stem o-ring O-Ring Schaltwelle	1	VITON 75 Sh. A	
16	body o-ring (DN ≥ 100) O-Ring Gehäuse	1	P.T.F.E.	

* DN ≥ 125: ASTM A216 WCB

** DN ≥ 125: ASTM A351 CF8M

 Spares parts / Ersatzteile

DIMENSIONS / ABMESSUNGEN

ALFA 10N

DN	15	20	25	32	40	50	65	80	100
ø"	½"	¾"	1"	1¼"	1½"	2"	2½"	3"	4"
ø E	14	19	24	29	38	48	64	76	95
L	36	39	43	51	63	83	107	120	152
M/R	150/-	150/-	185/-	185/-	275/-	275/-	380/-	380/-	440/500
H	84	87	95	99	118	126	143	149	185
h	52	54	69	72	95	101	122	127	151
P	33	36	43	48	63	77	86	90	113
f/t	10/6	10/6	12/8	12/8	16/10	16/10	22/14	22/14	30/18
Kg.	1.7	2.3	3	4	7	11.8	17	26	46
ISO 5211	F03	F03	F03	F03	F05	F05	F07	F07	F10
ø F	M5	M5	M5	M5	M6	M6	M8	M8	M10
ø G	36	36	36	36	50	50	70	70	102
V	34*	37*	40*	60*	48*	32	38	35	40
Z	34*	37*	40*	60*	48*	24	28	26	30
ø D	96	118	124	133	156	165	189	209	254
ANZ. BOHR.	4	4	4	4	4	8	8	8	8
ø GEW. METR.	M14	M16	M16	M16	M20	M16	M20	M20	M20
ø GEW. UNC	½"	5/8"	5/8"	5/8"	¾"	5/8"	¾"	¾"	¾"

ALFA 10NF

125	150
5"	6"
118	152
210	255
440/500	-/800
200	273
167	220
122	153
30/18	45/30
40	69
F10	F14
M10	M16
102	140
-	-
33	35
280	317,5
8	12
M20	M20
¾"	¾"

* Full threaded holes / Durchgehende Gewindebohrungen

